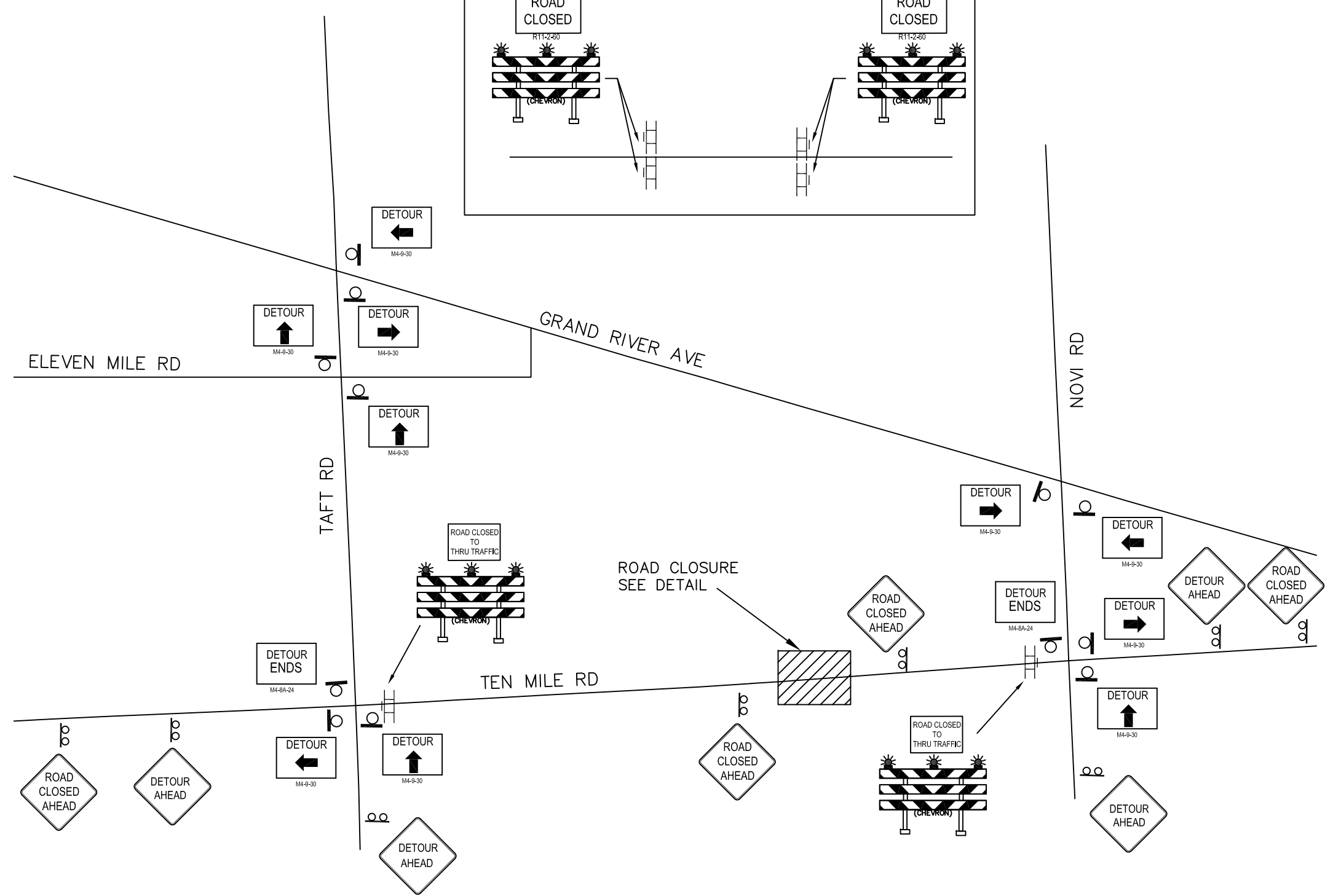
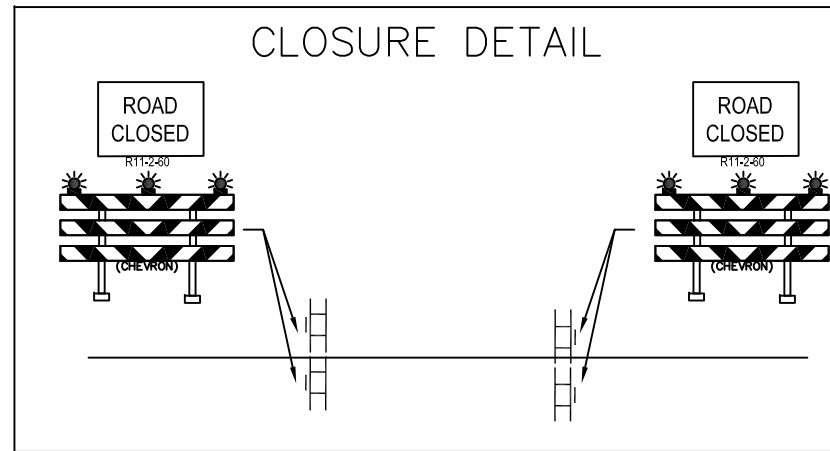




# Traffic Safety Construction Detour Diagram



- ### CONTRACTOR'S RESPONSIBILITY
- AS DIRECTED BY THE ENGINEER, THE CONTRACTOR SHALL PROVIDE AND MAINTAIN ANY ADDITIONAL SIGNS, BARRICADES AND LIGHTS WITHIN THE PROJECT TO PROTECT THE TRAFFIC AND WORK AREA.
  - THE CONTRACTOR SHALL PLACE SANDBAGS ON COUNTY FURNISHED BARRICADES TO PREVENT MOVEMENT OF THE BARRICADES. HE SHALL ATTACH AND MAINTAIN THREE- (3) STEADY BURN AMBER LIGHTS (TYPE C) ON EACH OF THESE BARRICADES. NUMBER REQUIRED (THIS SHEET) \_\_\_\_\_
  - THE CONTRACTOR SHALL BE RESPONSIBLE FOR COVERING AND UNCOVERING ALL CONSTRUCTION SIGNS AS NEEDED FOR THE PROPER MAINTENANCE OF TRAFFIC THROUGHOUT THE CONSTRUCTION AREA.
  - TRAFFIC CONTROL SIGNS AND STREET NAME SIGNS SHALL BE TEMPORARILY RELOCATED AND MAINTAINED BY THE CONTRACTOR. UPON COMPLETION OF THE PROJECT, TRAFFIC CONTROL SIGNS AND STREET SIGNS WILL BE RESET IN THEIR PROPER POSITION BY THE ROAD COMMISSION. THE ROAD COMMISSION MAY FURNISH AND ERECT TEMPORARY SPEED LIMIT SIGNS ALONG THE PROJECT. THE CONTRACTOR SHALL RELOCATE AND MAINTAIN THE TEMPORARY SPEED LIMIT SIGNS, AS DIRECTED BY THE PROJECT ENGINEER.
  - ANY OTHER SIGNS, WHICH THE CONTRACTOR MAY BE REQUIRED TO FURNISH, SHALL CONFORM TO THE MICHIGAN MANUAL OF UNIFORM TRAFFIC CONTROL DEVICES. THE CONTRACTOR SHALL NOT BEGIN ANY OPERATIONS ON THE PROJECT UNTIL ALL THE STOP SIGNS AND STREET NAME SIGNS HAVE BEEN RELOCATED AND STEADY BURN LIGHTS ARE ATTACHED TO ALL TYPE III BARRICADES.
  - ALL "TYPE III" BARRICADES FURNISHED BY THE CONTRACTOR FOR WORK PROTECTION SHALL BE FABRICATED WITH REFLECTORIZED MATERIAL WITH THREE (3) STEADY BURNING LIGHTS (TYPE C) SHALL BE ATTACHED AND MAINTAINED.
  - THE CONTRACTOR SHALL PROVIDE AND MAINTAIN FLASHING ARROW PANELS FOR USE AS INDICATED ON THE PLANS OR AS DIRECTED BY THE PROJECT ENGINEER.
  - ALL CONSTRUCTION TRAFFIC SIGNS PROVIDED AND INSTALLED BY THE ROAD COMMISSION WITHIN THE PROJECT WILL BE RELOCATED BY THE RCOO FOR EACH STAGE OF CONSTRUCTION. THE ROAD COMMISSION WILL REPAIR OR REPLACE ALL TRAFFIC SIGNS DAMAGED WITHIN THE PROJECT LIMITS THAT CAN NOT BE REPAIRED BY THE CONTRACTOR WITH THE EXISTING HARDWARE. THE CONTRACTOR WILL BE CHARGED FOR THOSE TRAFFIC SIGNS, WHICH ARE REPAIRED, OR REPLACED BY THE ROAD COMMISSION, THAT WERE DAMAGED DUE TO HIS OPERATIONS.
  - TEMPORARY PAVEMENT MARKINGS SHALL BE INSTALLED BY THE CONTRACTOR. REMOVAL OF TEMPORARY MARKINGS WILL BE REQUIRED AS DIRECTED BY THE ENGINEER. THE CONTRACTOR SHALL REMOVE ANY EXISTING CONFLICTING PAVEMENT MARKING PRIOR TO INSTALLING TEMPORARY PAVEMENT MARKINGS.
  - ALL CONSTRUCTION WARNING SIGNS SHALL USE FLUORESCENT ORANGE (PRISMATIC) SHEETING.

- ### ROAD COMMISSION'S RESPONSIBILITY
- THE ROAD COMMISSION WILL FURNISH AND ERECT THE SIGNS LISTED BELOW AT THE LOCATIONS SHOWN ON THE CONSTRUCTION SIGNING DIAGRAM.
  - THE ROAD COMMISSION WILL PLACE BARRICADES AT EACH END OF THE PROJECT AND AT MAIN ROAD INTERSECTIONS WHEN THE ROAD IS CLOSED TO TRAFFIC.
  - WHERE A DETOUR IS NECESSARY, THE ROAD COMMISSION WILL ESTABLISH AND SIGN THE DETOUR ROUTE.
  - ALL CONSTRUCTION SIGNS SHALL BE BLACK LETTERS ON AN ORANGE BACKGROUND UNLESS OTHERWISE SPECIFIED.

### MATERIALS REQUIRED

NO. REQ'D	STREET NAME	NO. REQ'D	NO. REQ'D
—	ROAD WORK AHEAD	D3-1-36	—
—	DETOUR (up arrow)	NO. REQ'D	—
—	DETOUR (right arrow)	M4-9-30	RIGHT 3
—	DETOUR (left arrow)	NO. REQ'D	LEFT 3
—	DETOUR (down arrow)	M4-8a24	THRU 4
—	DETOUR ENDS	NO. REQ'D	2
4	DETOUR AHEAD	TYPE III BARRICADE	—
—	ROAD CLOSED AHEAD	ORANGE ON WHITE	—
—	ROAD CLOSED TO THRU TRAFFIC	NO. REQ'D	6
4	ROAD CLOSED AHEAD	R11-1-48	2
—	ROAD CLOSED	R11-2-48	4

NO. REQ'D	SPECIAL SIGNS	NO. REQ'D
—	SPECIAL	—
—	SPECIAL	—

C:\Users\swikom\Documents\Traffic\AUTOCAD DRAWINGS\NovITEN MILE DETOUR.dwg May 06, 2019 - 7:22am