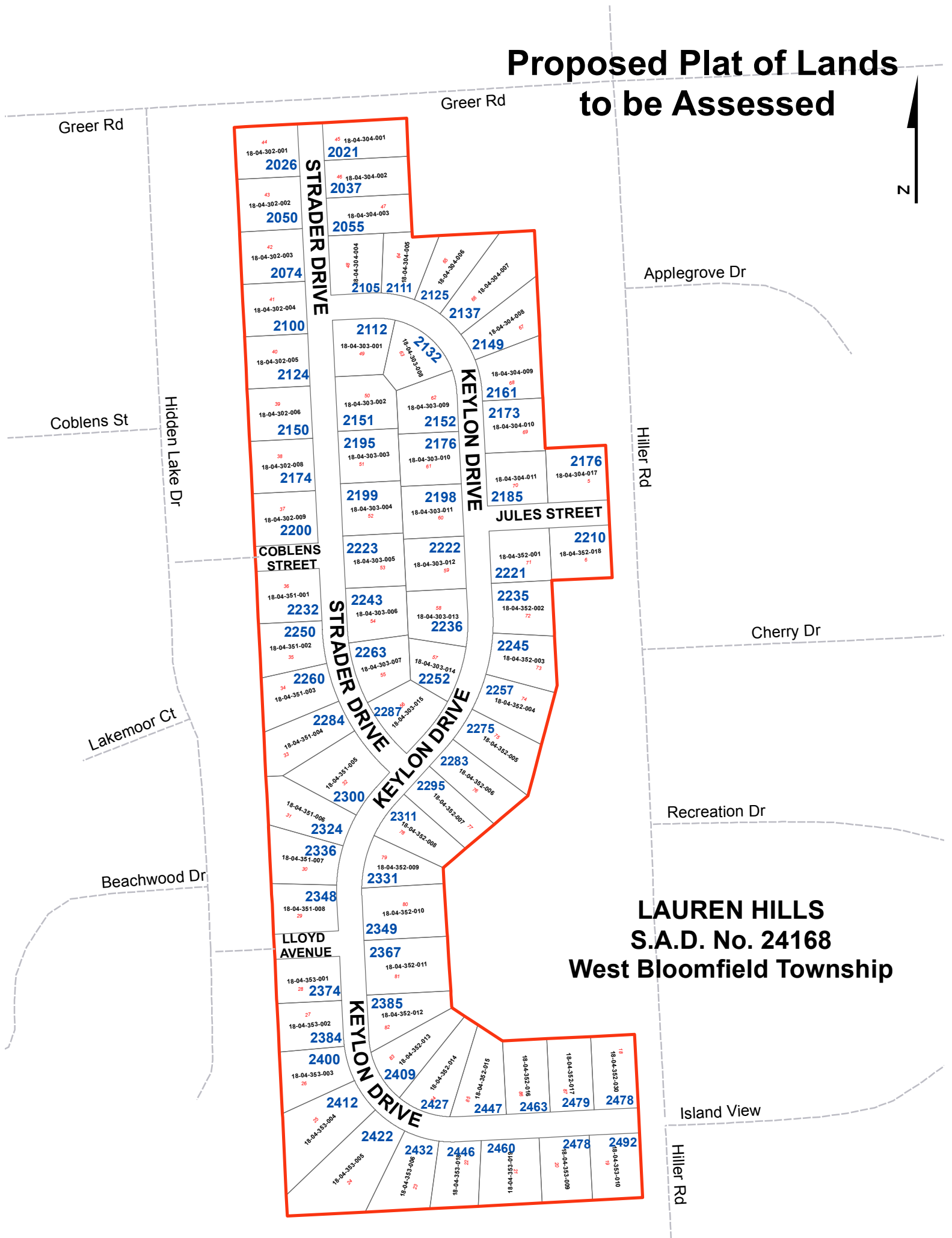


# Proposed Plat of Lands to be Assessed



**LAUREN HILLS**  
**S.A.D. No. 24168**  
**West Bloomfield Township**

Lot Number	Parcel ID
2026	18-04-302-001
2037	18-04-304-001
2050	18-04-302-002
2055	18-04-304-002
2074	18-04-302-003
2100	18-04-302-004
2124	18-04-302-005
2150	18-04-302-006
2174	18-04-302-008
2200	18-04-302-009
2232	18-04-351-001
2250	18-04-351-002
2260	18-04-351-003
2284	18-04-351-004
2300	18-04-351-005
2324	18-04-351-006
2336	18-04-351-007
2348	18-04-351-008
2374	18-04-353-001
2384	18-04-353-002
2400	18-04-353-003
2412	18-04-353-004
2422	18-04-353-005
2432	18-04-353-006
2446	18-04-353-007
2460	18-04-353-008
2478	18-04-353-009
2492	18-04-353-010
2112	18-04-303-001
2132	18-04-303-002
2151	18-04-303-002
2195	18-04-303-003
2199	18-04-303-004
2223	18-04-303-005
2243	18-04-303-006
2263	18-04-303-007
2287	18-04-303-015
2300	18-04-303-005
2311	18-04-303-008
2331	18-04-352-009
2349	18-04-352-010
2367	18-04-352-011
2385	18-04-352-012
2409	18-04-352-013
2427	18-04-352-014
2447	18-04-352-015
2463	18-04-352-016
2479	18-04-352-017
2492	18-04-352-018
2125	18-04-304-005
2137	18-04-304-006
2149	18-04-304-008
2161	18-04-304-009
2173	18-04-304-010
2176	18-04-304-011
2185	18-04-304-011
2198	18-04-303-011
2222	18-04-303-012
2236	18-04-303-013
2252	18-04-303-014
2275	18-04-352-005
2283	18-04-352-006
2295	18-04-352-007
2311	18-04-352-008
2331	18-04-352-009
2349	18-04-352-010
2367	18-04-352-011
2385	18-04-352-012
2409	18-04-352-013
2427	18-04-352-014
2447	18-04-352-015
2463	18-04-352-016
2479	18-04-352-017
2492	18-04-352-018