

# HALSTED RD (SOUTH) CLOSURE DETOUR



Know what's below.  
Call before you dig.

See sign fabrication sheets for design of signs paid for by "Sign, Type B, Temp, Special."

**SIGNS REQUIRED FOR THIS SHEET**

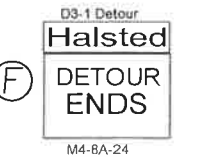
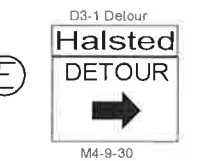
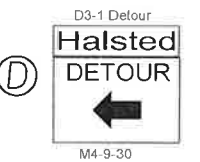
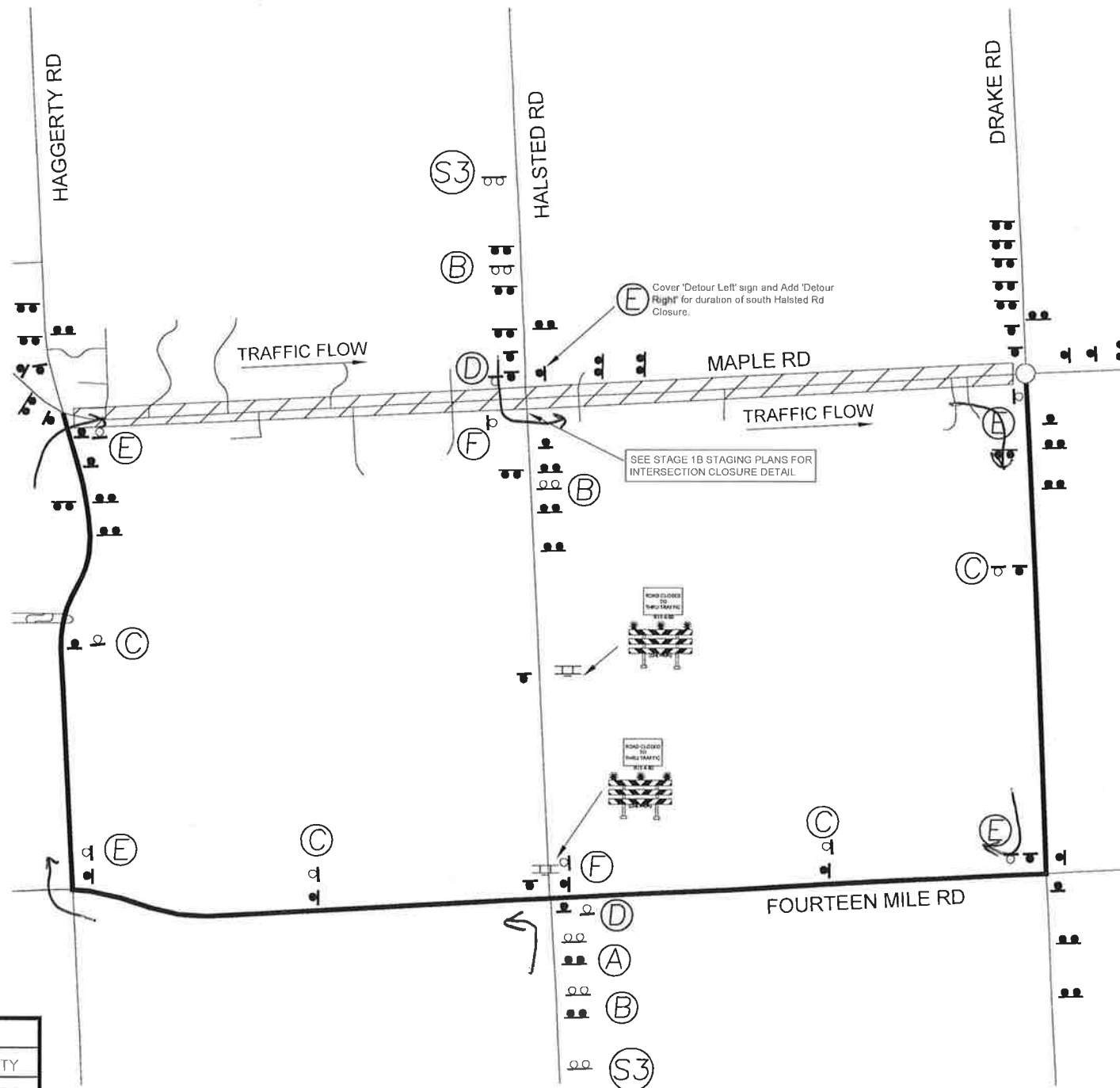
- 11 - M4-9 (24x18)
- 1 - W20-2 (48x48)
- 3 - W20-3 (48x48)
- 13 - D3-1 DETOUR (30x12)
- 2 - SPECIAL (96x48)

**SIGNS REQUIRED FOR BOTH SOUTH AND NORTH HALSTED APPROACH CLOSURES**

- 2 - M4-8A (24x18)
- 11 - M4-9 (24x18)
- 3 - W20-2 (48x48)
- 4 - W20-3 (48x48)
- 13 - D3-1 DETOUR (30x12)
- 3 - SPECIAL (96x48)

**QTY REQUIRED FOR BOTH SOUTH AND NORTH HALSTED APPROACH CLOSURES**

SIGNS THIS SHEET BY CONTRACTOR		
ITEM	UNIT	QTY
Sign, Type B, Temp, Prismatic, Furn	Sft	180
Sign, Type B, Temp, Prismatic, Oper	Sft	180
Sign, Type B, Temp, Prismatic, Special, Furn	Sft	135
Sign, Type B, Temp, Prismatic, Special, Oper	Sft	135
Barricade, Type III, High Intensity, Double Sided, Lighted, Furn	Ea	2
Barricade, Type III, High Intensity, Double Sided, Lighted, Oper	Ea	2
Sign Cover	Ea	1



**Halsted Rd Closed At Maple Rd**  
Follow Detour  
Starting XX/XX/XX

Construction Detour for west bound Maple Rd to remain in place.



PROJECT NO. 52661  
DATE 03/17/17

TS HALSTED SOUTH DETOUR  
MAPLE ROAD  
HAGGERTY ROAD TO DRAKE ROAD

DESIGN PHASE FINAL PLANS  
SHEET NO. 33 OF 211

T:\PROJECTS\52661 - MAPLE ROAD HAGGERTY TO DRAKE\CAD FILES\MASTER PLAN\TRAFFIC SAFETY\52661 - TS DETOUR SIGNING Mar\_30\_17\_7:34 AM

PROJECT NAME: MAPLE ROAD HAGGERTY ROAD TO DRAKE ROAD  
CONTROL SECTION: STUB3182  
MDOT JOB NO.: 132761A  
PROJECT NO. 52661  
ENGINEER: SQUAD 2