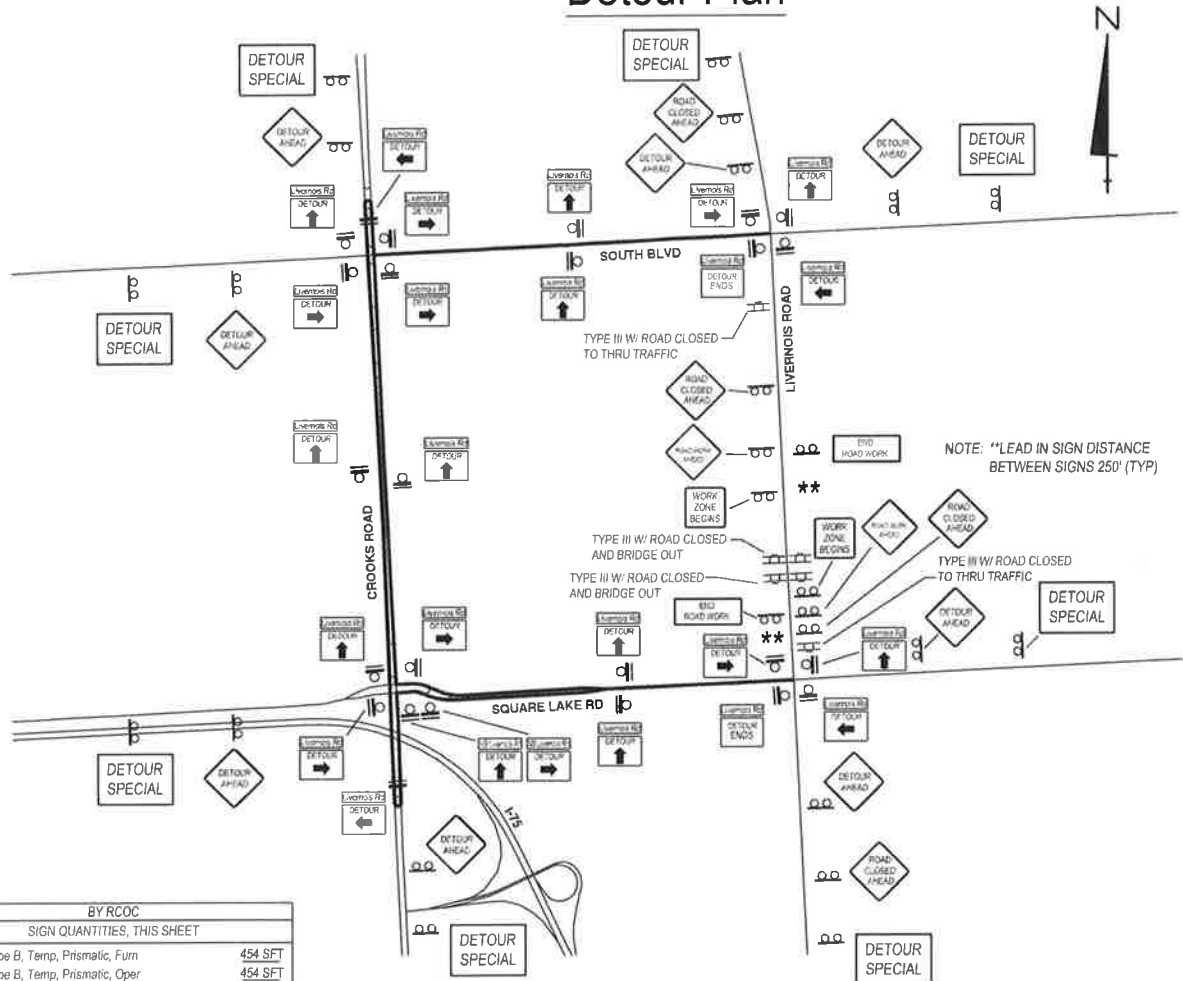


# Detour Plan



NOTE: "LEAD IN SIGN DISTANCE BETWEEN SIGNS 250' (TYP)

BY RCOC	
SIGN QUANTITIES, THIS SHEET	
Sign, Type B, Temp, Prismatic, Furn	454 SFT
Sign, Type B, Temp, Prismatic, Oper	454 SFT
Sign, Type B, Temp, Prismatic, Special, Furn	353 SFT
Sign, Type B, Temp, Prismatic, Special, Oper	353 SFT
Barricade, Type III, High Intensity, Double Sided, Furn	8 EA
Barricade, Type III, High Intensity, Double Sided, Oper	8 EA

## LIVERNOIS ROAD DETOUR

### KEY

8		
2	R11-2-48	ROAD CLOSED
2	R11-2-48 (MOD)	BRIDGE OUT
2	R11-1-48	ROAD CLOSED TO FLOW TRAFFIC
8	DETOUR SPECIAL	Livernois Rd CLOSED North of Square Lake Future Detour Starting XX/XX/XX
2	R15-18C	WORK ZONE BEGINS
2	G20-2	END ROAD WORK
2	W20-1-48	ROAD WORK AHEAD
8	W20-2-48	DETOUR AHEAD
4	W20-3-48	ROAD CLOSED AHEAD
2	M4-BA-30	DETOUR ENDS
1	D3-1	NB Livernois Rd
1	D3-1	SB Livernois Rd
24	D3-1	Livernois Rd
8	M4-9-30 R	DETOUR
11	M4-9-30 T	DETOUR
4	M4-9-30 L	DETOUR

EACH M4-9 SHALL HAVE A ROAD NAME PLAQUE

— MAJOR ROAD  
 — DETOUR ROUTE

T:\PROJECTS\33523 - LIVERNOIS OVER GIBSON DRAIN TRIBUTARY CULVERT REPLACEMENT SAFETY\TRAFFIC SAFETY\TRAFFIC SAFETY\TRAFFIC SAFETY-DETOUR - J1 - 31 - 2.04.PDF

PROJECT NAME: LIVERNOIS ROAD OVER GIBSON DRAIN TRIBUTARY CULVERT REPLACEMENT  
 PROJECT NO. 33523  
 SHEET NO. 9 OF 31

 ROAD COMMISSION 401 OAKLAND COUNTY BEVERLY HILLS, MICHIGAN PHONE 248-865-4887 WEB WWW.ROADCOM.MI	PROJECT NO. 33523	DESIGN PHASE FINAL PLAN
	DATE 07/25/2017	SHEET NO. 9 OF 31